

LED High Bay Light

RSMLS-Series



Create value for you

RSMLS-Series

Overview

Up to 130Lm/W system efficacy
80-800W, up to 2000W replacement

Modular design allows this fixture to get different power for different applications to realize the most economical solution

1-10V/PWM/Resistance dimming options

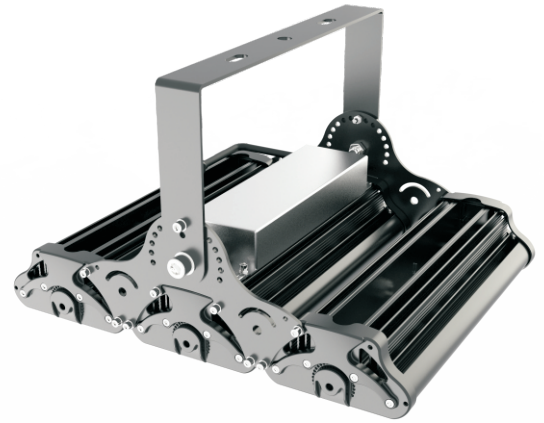
110-277Vac/347Vac/480Vac, 3000-6500K, Ra: 70/80

Up to 20KV surge protection

Optical grade polycarbonate lens material

Accurate designed (15,30,45,60,90,120,30*70,45*85) degree lens

IP65 resistance



Lighting Dimensions

RSMLS-L-Series



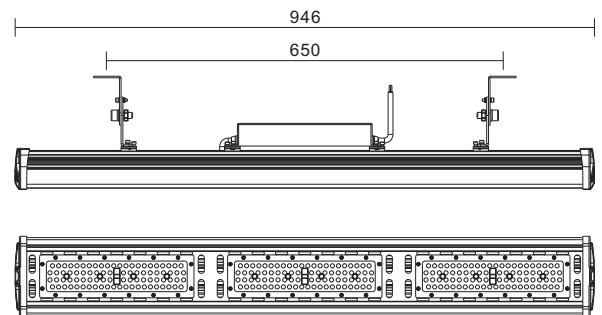
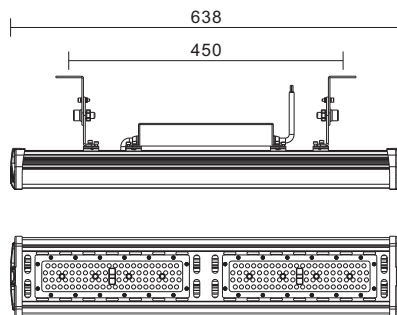
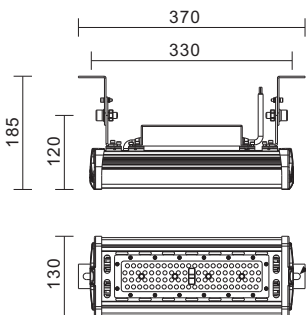
RSMLS-80W-031



RSMLS-160W-061



RSMLS-240W-091



RSMLS-U-1-Series



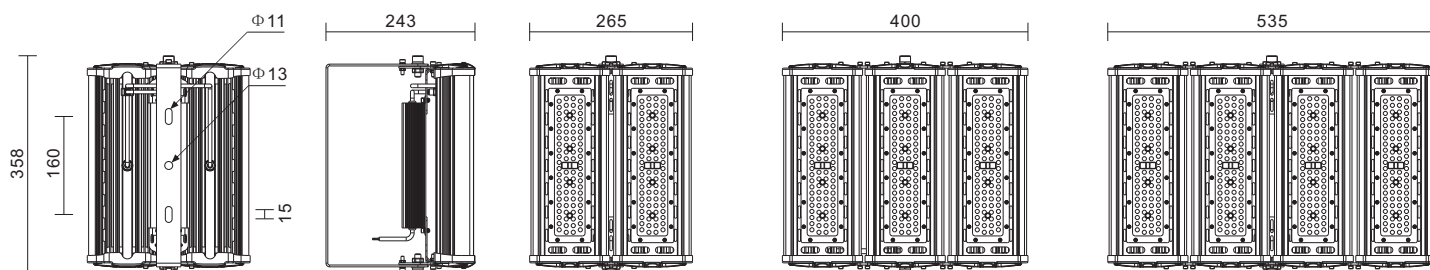
RSMLS-160W-032



RSMLS-240W-033



RSMLS-320W-034



RSMLS-U-2-Series



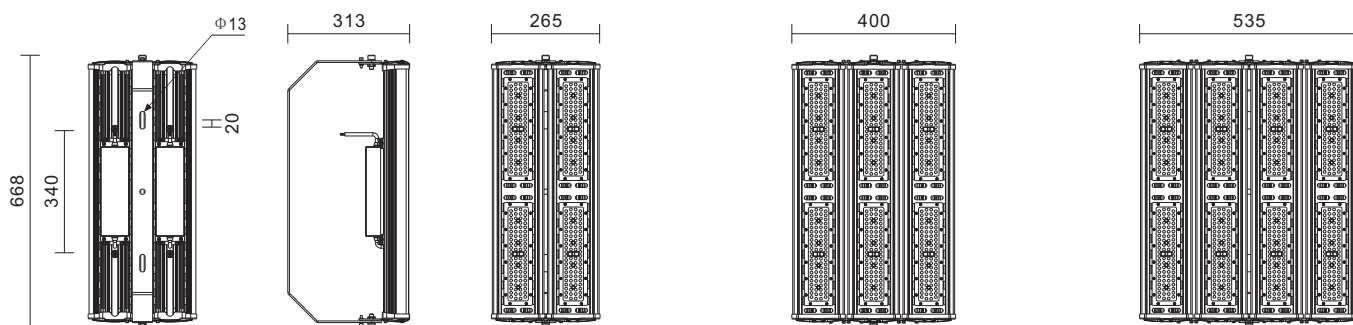
RSMLS-320W-062



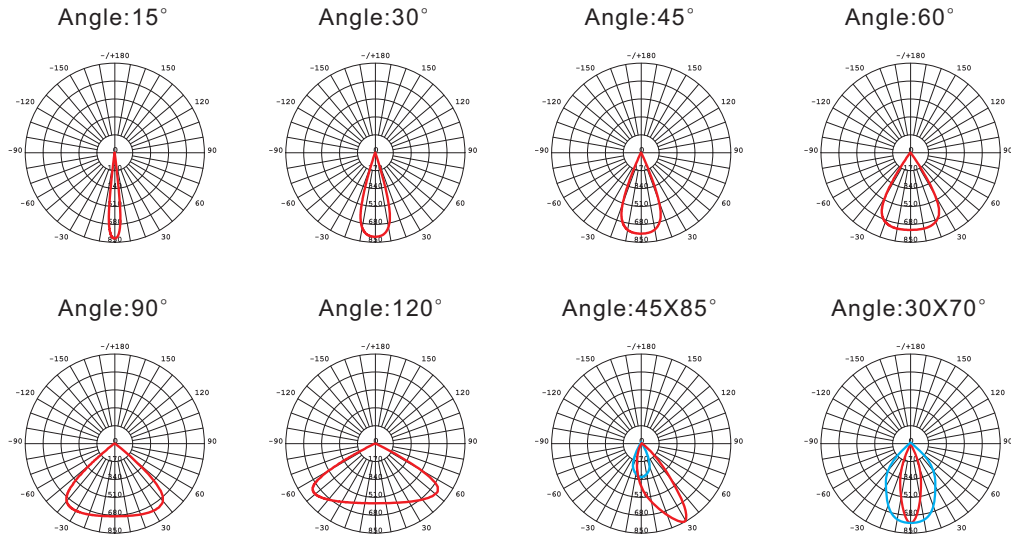
RSMLS-480W-063



RSMLS-640W-064



Illumination



Parameter

RSMLS-L-Series

Product Model	Power	Product Size(mm)	N.W.	Carton Size(mm)	G.W.	Input Voltage	System Efficacy	Beam Angle
RSMLS-80W-031	80W	370*130*185mm	2.9Kg	390*180*180mm	3.3Kg	110-277V/277-480V	130Lm/W	30/45/60/90/120/30*70
RSMLS-160W-061	160W	638*130*185mm	4.4Kg	690*315*180mm	5.1Kg	110-277V/277-480V	130Lm/W	30/45/60/90/120/30*70
RSMLS-240W-091	240W	946*130*185mm	5.8Kg	1000*180*190mm	6.8Kg	110-277V/277-480V	130Lm/W	30/45/60/90/120/30*70

RSMLS-U-1-Series

Product Model	Power	Product Size(mm)	N.W.	Carton Size(mm)	G.W.	Input Voltage	System Efficacy	Beam Angle
RSMLS-160W-032	160W	358*265*243mm	4.8Kg	400*315*175mm	5.5Kg	110-277V/277-480V	130Lm/W	30/45/60/90/120/30*70
RSMLS-240W-033	240W	358*400*243mm	6.5Kg	400*450*190mm	7.5Kg	110-277V/277-480V	130Lm/W	30/45/60/90/120/30*70
RSMLS-320W-034	320W	358*535*243mm	9.2Kg	400*585*175mm	10.6Kg	110-277V/277-480V	130Lm/W	30/45/60/90/120/30*70
RSMLS-400W-035	400W	358*670*243mm	10.9Kg	400*720*190mm	12.8Kg	110-277V/277-480V	130Lm/W	30/45/60/90/120/30*70

RSMLS-U-2-Series

Product Model	Power	Product Size(mm)	N.W.	Carton Size(mm)	G.W.	Input Voltage	System Efficacy	Beam Angle
RSMLS-320W-062	320W	668*265*313mm	8.9Kg	690*315*180mm	9.8Kg	110-277V/277-480V	130Lm/W	30/45/60/90/120/30*70
RSMLS-480W-063	480W	668*400*313mm	11.7Kg	710*480*210mm	13.3Kg	110-277V/277-480V	130Lm/W	30/45/60/90/120/30*70
RSMLS-640W-064	640W	668*535*313mm	15.9Kg	740*640*240mm	18.2Kg	110-277V/277-480V	130Lm/W	30/45/60/90/120/30*70
RSMLS-800W-065	800W	668*670*313mm	20.6Kg	740*755*240mm	23.4Kg	110-277V/277-480V	130Lm/W	30/45/60/90/120/30*70