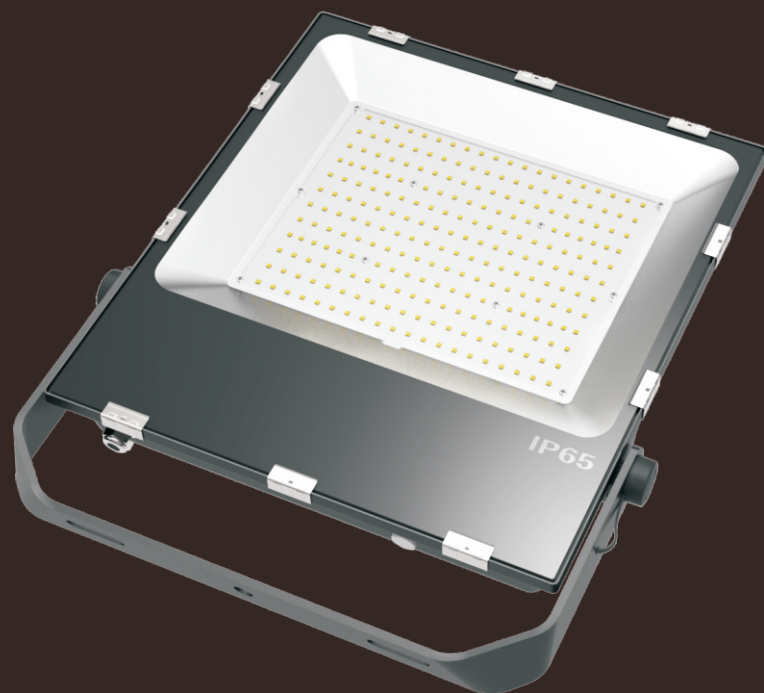


# LED Flood Light

## RSFL-Series



**Create value for you**

# RSWP-Series

## Overview

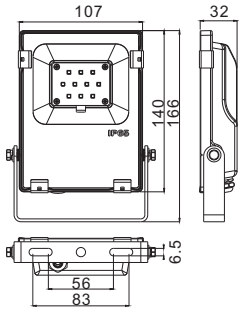
- Up to 120Lm/W system efficacy
- 10-200W, up to 30-400W replacement
- Built-in smart system & photocell sensor available
- 1-10V/PWM/Resistance dimming options
- 110-277Vac, 3000-6500k, Ra:70/80
- Up to 20KV surge protection(optional)
- IP65&IK08 resistance



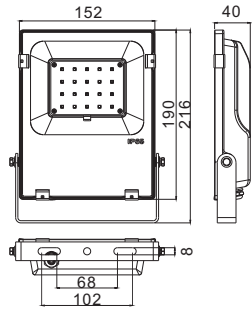
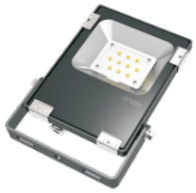
## Lighting Dimensions



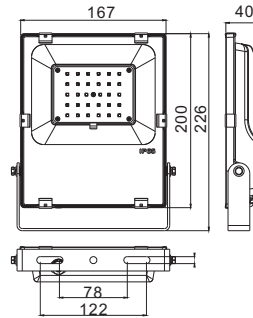
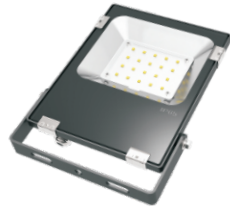
# Lighting Dimensions



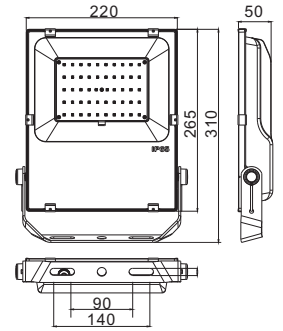
RSSL-10W



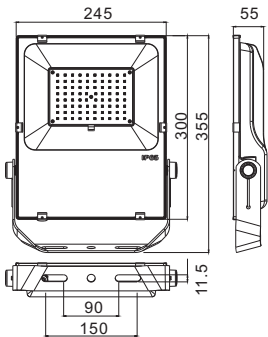
RSSL-20W



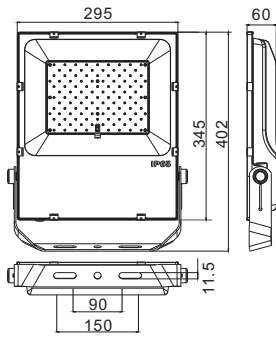
RSSL-30W



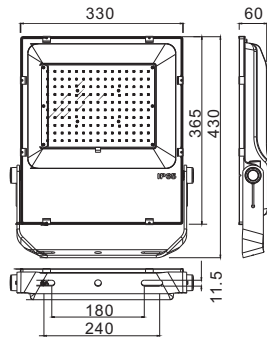
RSSL-50W



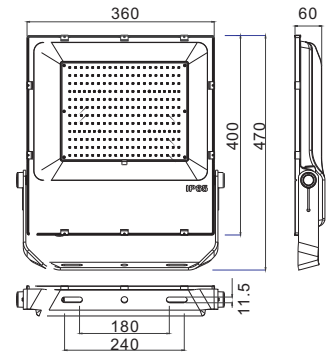
RSSL-80W



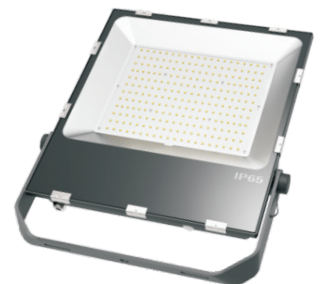
RSSL-100W



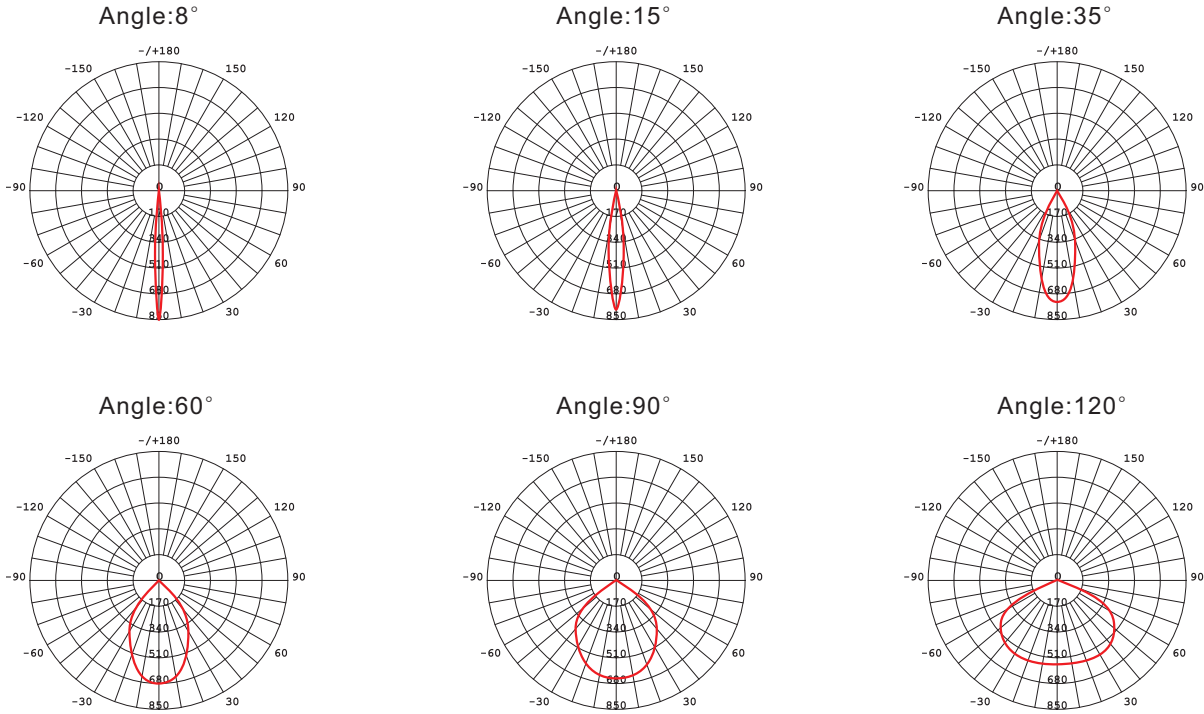
RSSL-150W



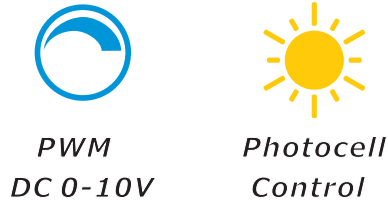
RSSL-200W



# Illumination



# Smart system



# Parameter

Product Model	Power	Product Size(mm)	N.W.	Carton Size(mm)	G.W.	Input Voltage	System Efficacy	Beam Angle
RSFL-10W	10W	166*107*32mm	0.5Kg	200*135*40mm	0.6Kg	110-277V	120Lm/W	8/15/60/90/120
RSFL-20W	20W	216*152*40mm	0.9Kg	250*180*48mm	1.1Kg	110-277V	120Lm/W	8/15/60/90/120
RSFL-30W	30W	226*167*40mm	1.4Kg	260*195*48mm	1.7Kg	110-277V	120Lm/W	8/15/60/90/120
RSFL-50W	50W	310*220*50mm	2.2Kg	355*255*58mm	2.6Kg	110-277V	120Lm/W	8/15/60/90/120
RSFL-80W	80W	355*245*55mm	3.5Kg	435*340*130mm	4.0Kg	110-277V	120Lm/W	8/15/60/90/120
RSFL-100W	100W	402*295*60mm	4.3Kg	510*430*135mm	5.2Kg	110-277V	120Lm/W	8/15/60/90/120
RSFL-150W	150W	430*330*60mm	5.4Kg	510*430*135mm	6.6Kg	110-277V	120Lm/W	8/15/60/90/120
RSFL-200W	200W	470*360*60mm	6.0Kg	555*460*135mm	7.5Kg	110-277V	120Lm/W	8/15/60/90/120